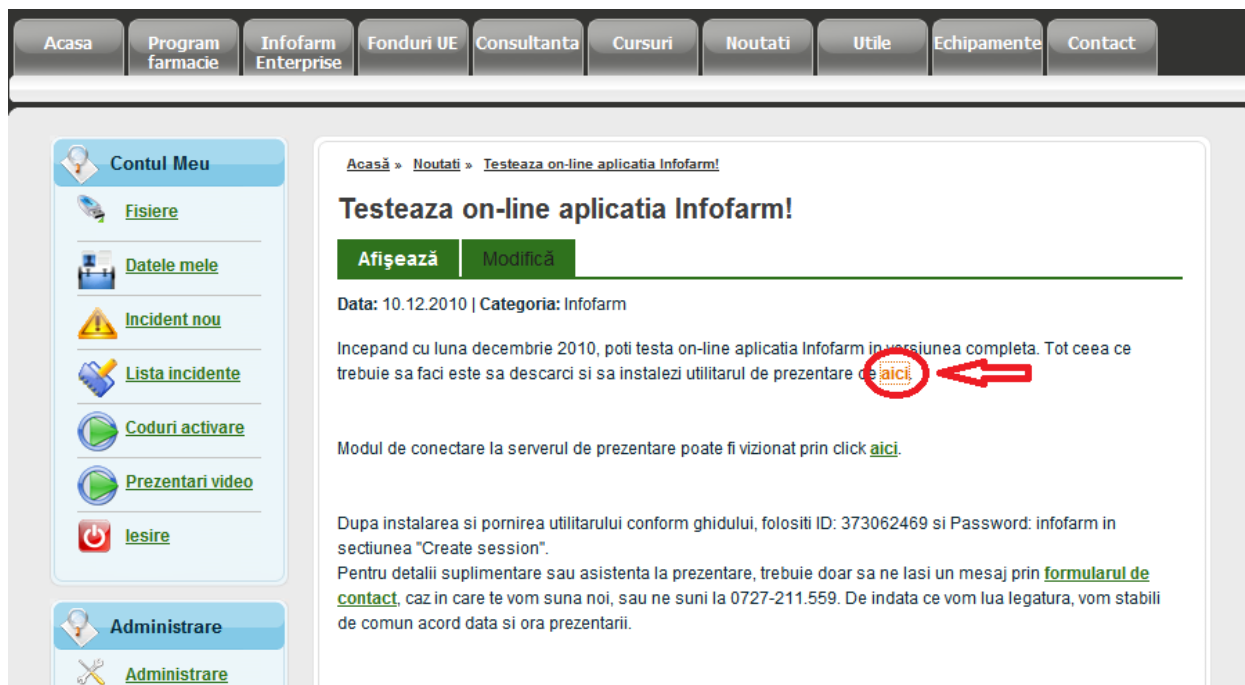
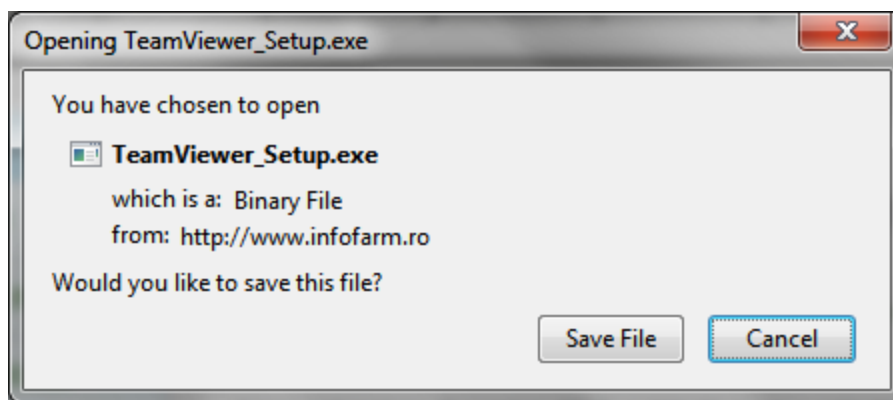


Ghid instalare Team Viewer

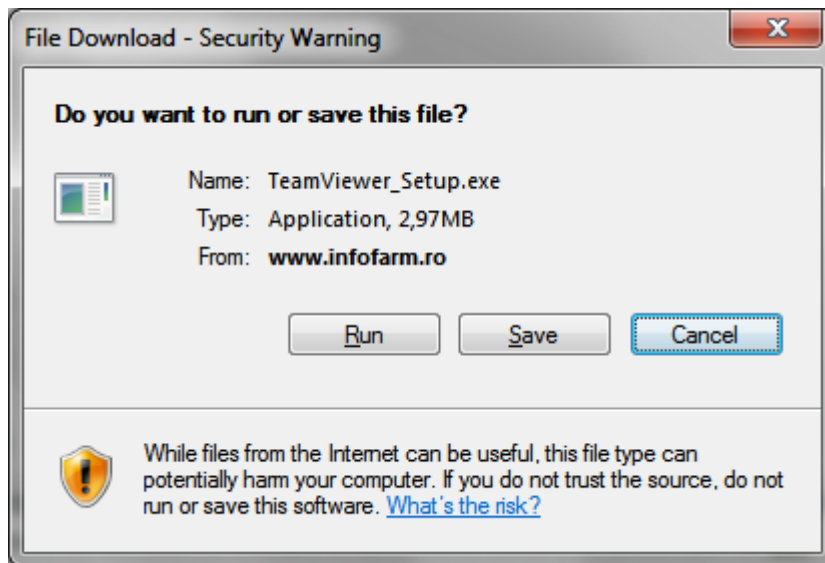
1. Se da dublu-click pe link-ul aici conform cu imaginea de mai jos.



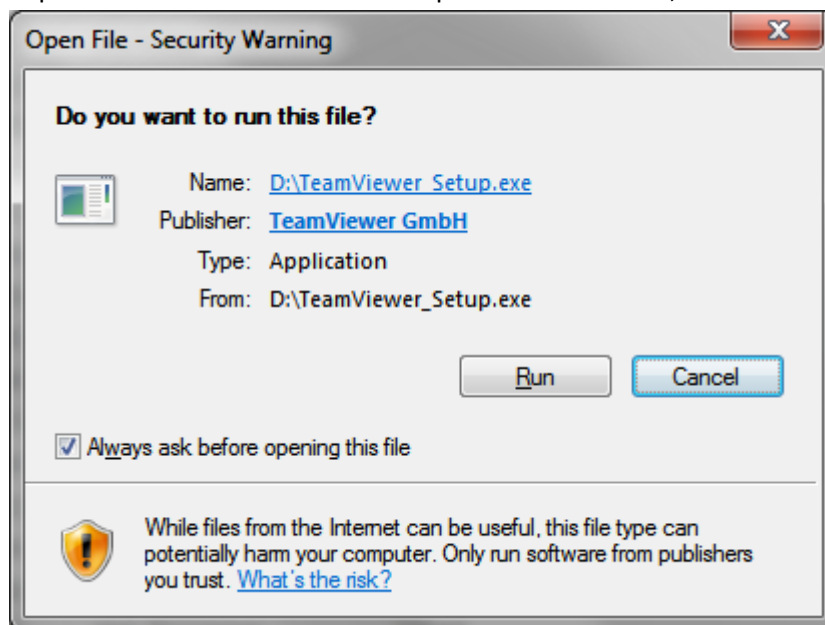
2. Va aparea mesajul de descarcare a aplicatiei (Mozilla Firefox):



Sau pentru Internet Explorer:

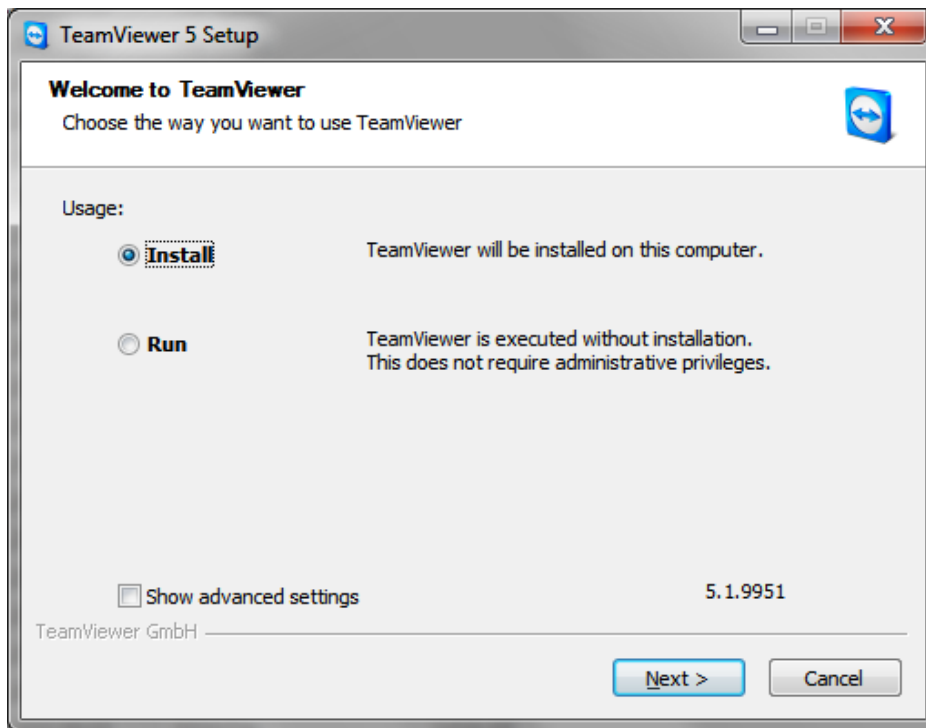


3. Se apasa butonul "Save files" sa "Save" si se alege locatia pentru descarcare.
4. Dupa descarcare se face dublu-click pe kitul de instalare, moment in care va aparea fereastra:

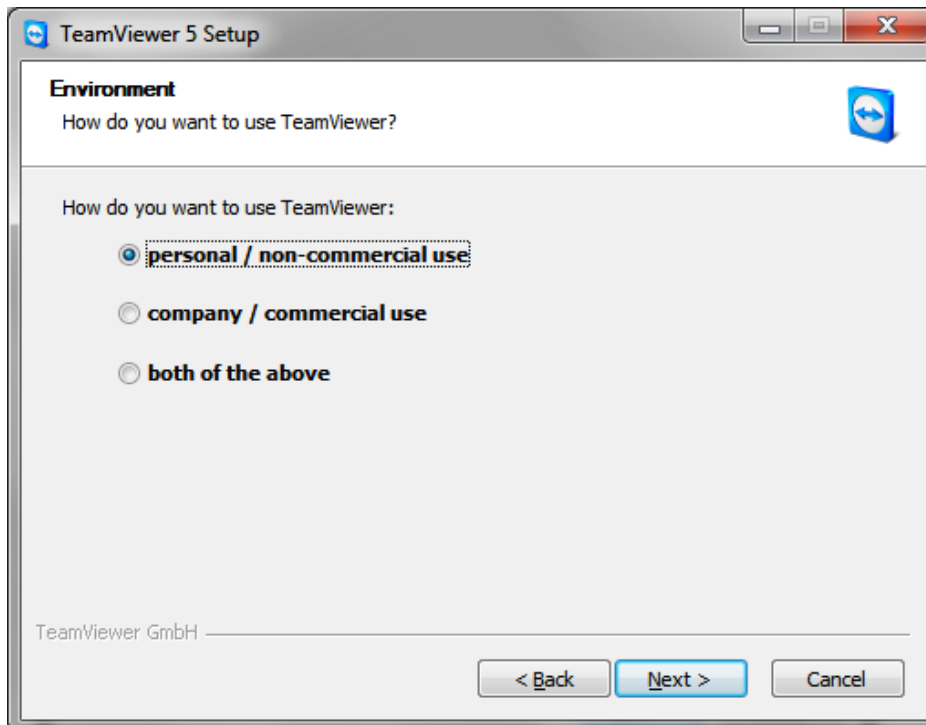


Se apasa "Run".

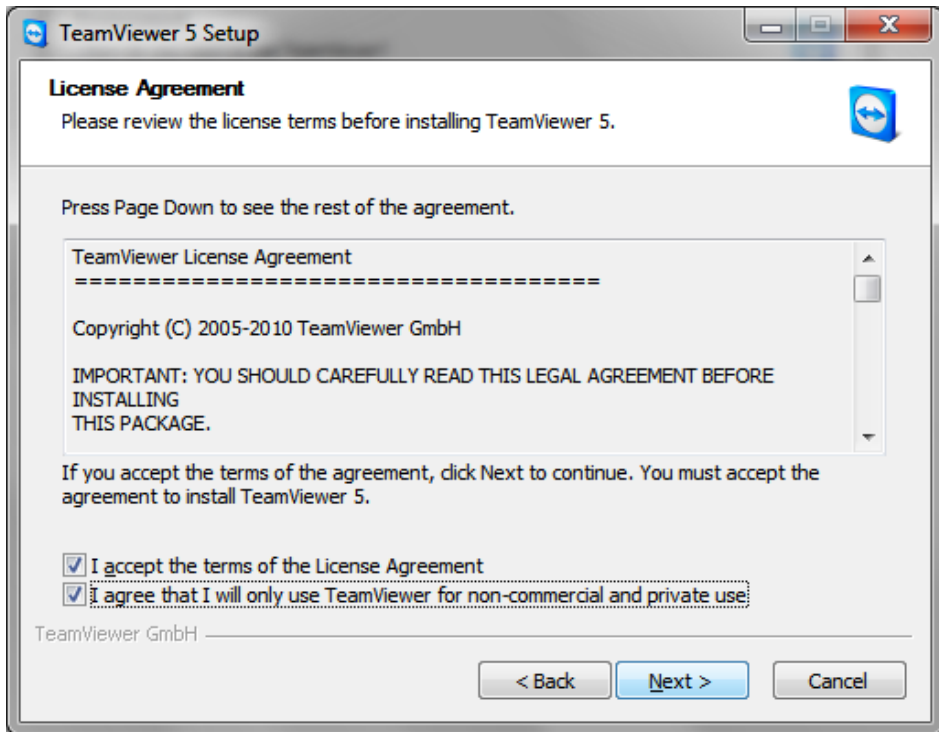
5. Se alege "Install" conform imaginii de mai jos si se apasa "Next".



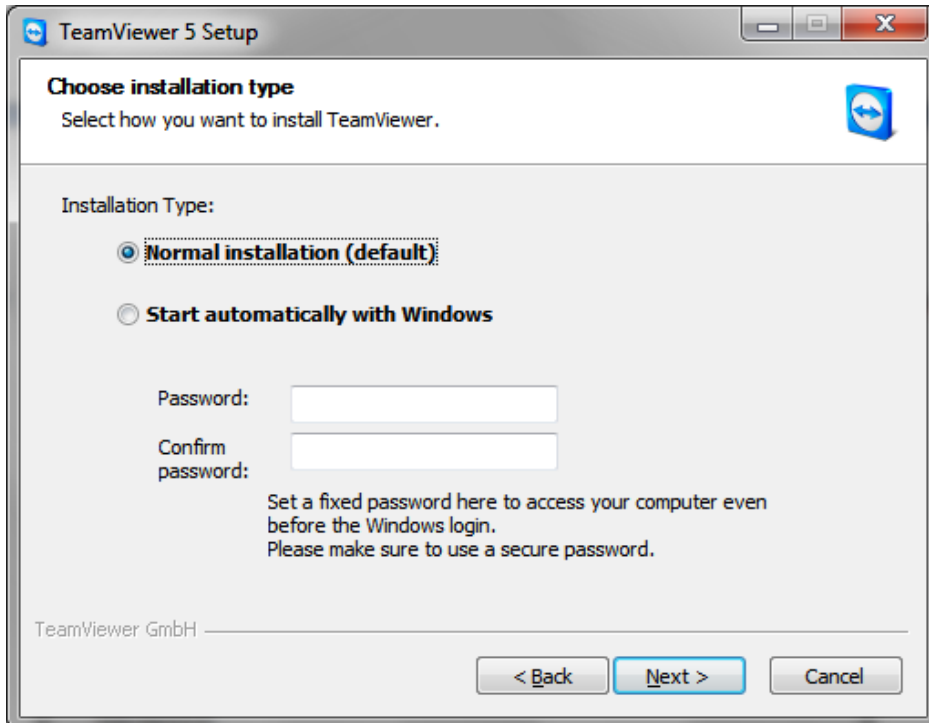
6. Se bifeaza "personal/non-commercial use", dupa care se apasa "Next".



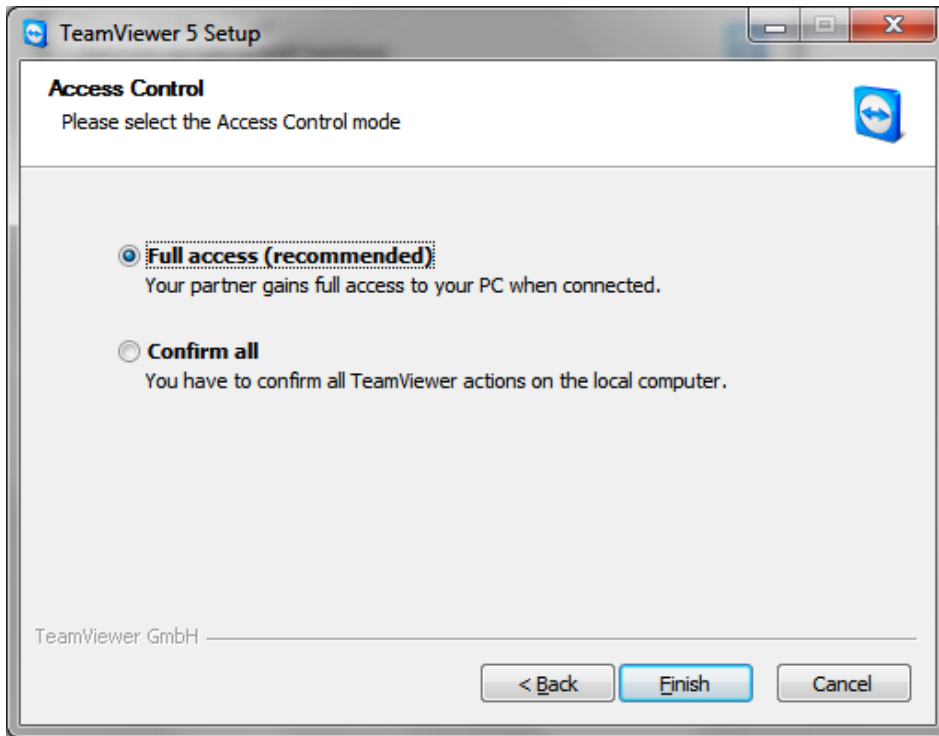
7. Se bifeaza cele 2 casute de acceptare a conditiilor, conform cu imaginea de mai jos si se apasa "Next".



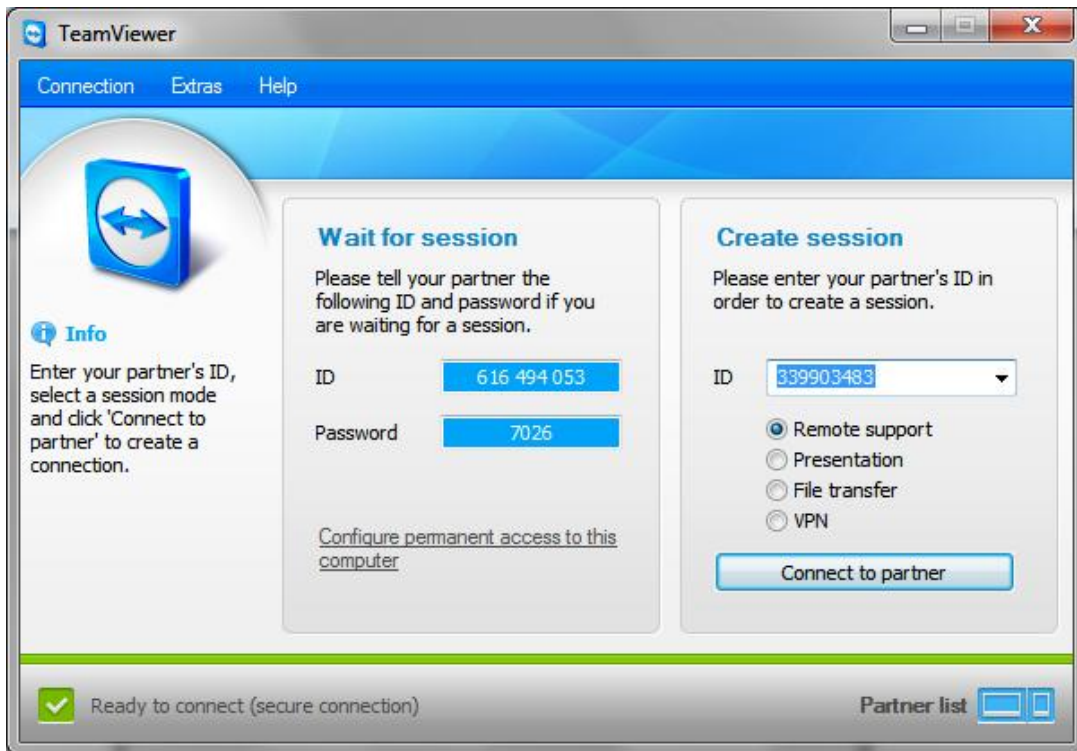
8. Se alege "Normal installation" si se apasa "Next".



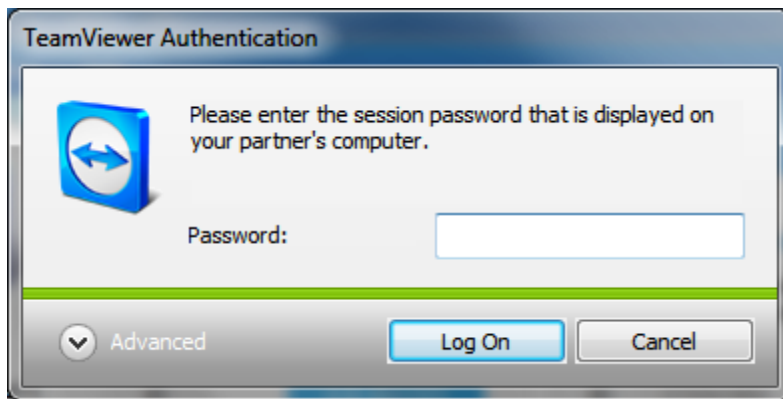
9. Se bifeaza "Full acces", dupa care se apasa "Finish".



10. Dupa finalizarea instalarii va aparea urmatoarea fereastra:



11. In sectiunea "Create session" la campul "ID" se tasteaza 373062469 si se apasa "Connect to partner", moment in care apare feresatra de introducere a parolei:



In campul "Password" se tasteaza parola "infofarm" dupa care se apasa pe "Log On". In acest moment sunteti conectat la serverul de prezentare a aplicatiei Infofarm. Pentru prima utilizare recomandam deschiderea si consultarea "Ghidului de prima utilizare" de pe ecran.